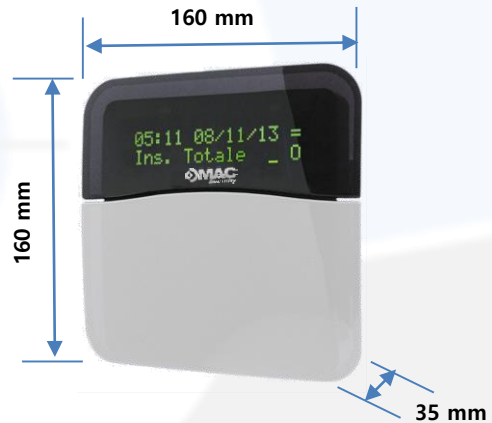




## DMAC Security Wired Key Pad



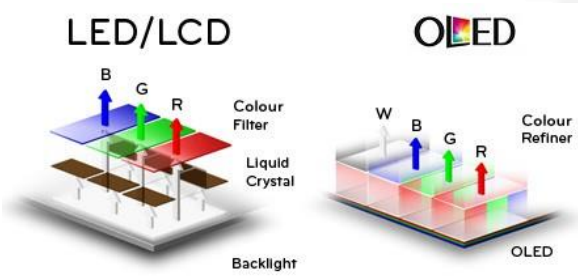
### Dimensions (mm):



## Features

- **System:** Bi-directional Wired OLED / LCD Keypad with RS-485 Bus (4-Wire) for programming & Control.
- **RS-485:** RS-485 Bus for connection to DMAC-IP-iALARM
- **Functionality:** Arming/Disarming functions, Silent arming, system status indication, independent alarm input for NC external contact, Panic, optional speaker
- **Display:** Dual -line OLED/LCD Backlit display.
- **Power:** 12VDC

### Options:

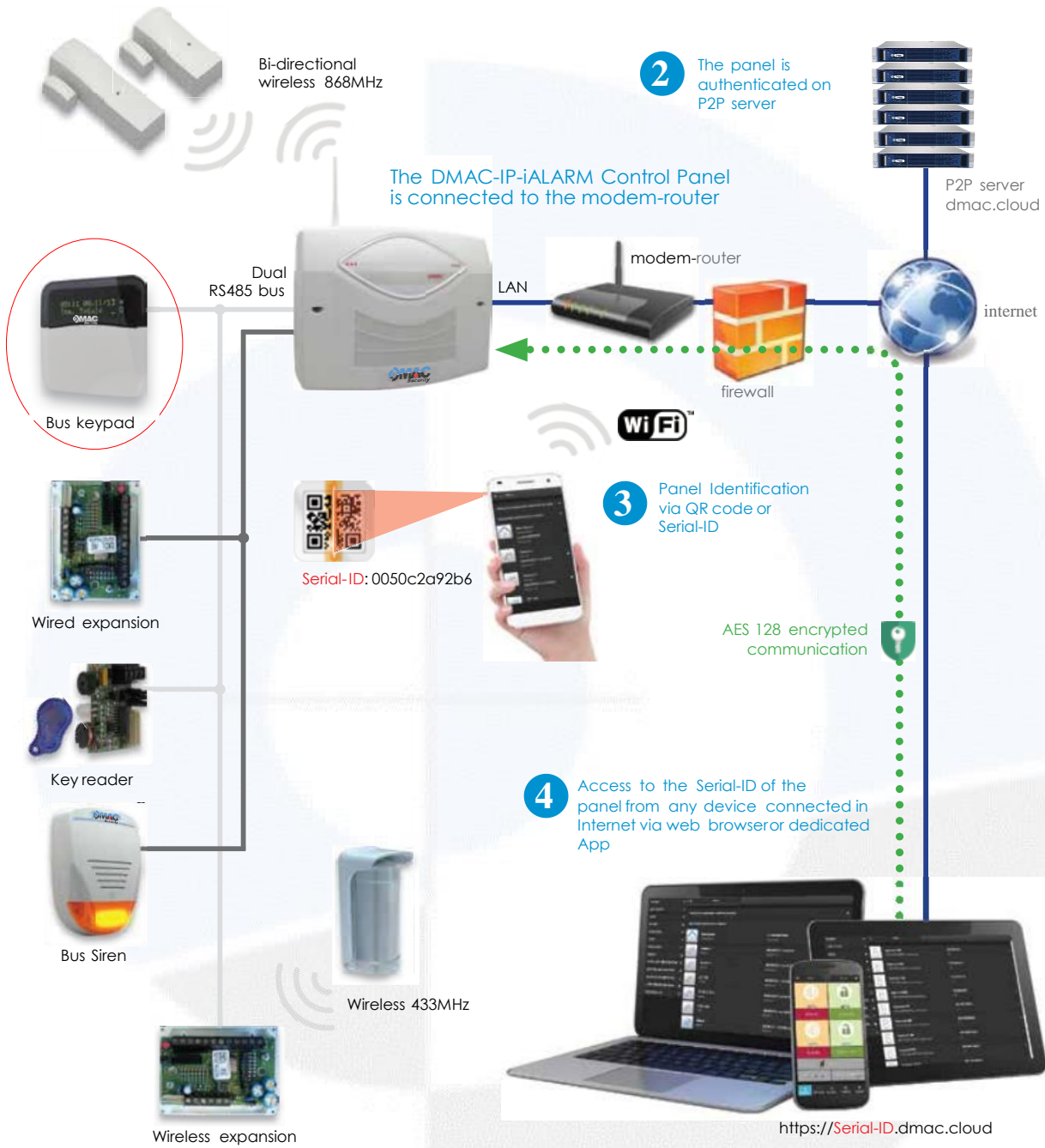


- |   |   |
|---|---|
| <ul style="list-style-type: none"> <li>• Complex Structure</li> <li>• BLU (Backlight Unit) CCFL, LED</li> <li>• Lighting Unit = Pixel Unit</li> </ul> | <ul style="list-style-type: none"> <li>• Simple Structure</li> <li>• Self-emissive</li> <li>• Lighting Unit = Pixel Unit</li> </ul> |
|---|---|

ONLY IN THE  
RS485 BUS  
WIRED  
VERSION

**bus**

**SPEAKING  
KEYPAD**



# Intelligent Bidirectional OLED/LCD Key Pad for DMAC *i*ALARM panel



# DMAC Security IP Perimeter Intrusion Detection DMAC-KPOLED-WRD, DMAC-LCD-WRD

## Specifications:

### Device

Capacity	Bi-directional Wired OLED (Optional Speaker for this version)/LCD Keypad with RS-485 Bus (4-Wire) for programming & Control.

### Characteristics

	Arming/Disarming functions, Silent arming, system status indication, independent alarm input for NC external contact, Panic, optional speaker
--	---

### Display

OLED	Large 2-Line <b>OLED</b> Display for excellent readability of information and backlit keys for night time use.
LCD	Large 2-Line <b>LCD</b> Display for excellent readability of information and backlit keys for night time use.

### Communication Protocol

RS-485	Connection via RS-485 Bus to DMAC-IP-iALARM

### Power

Power Supply	12VDC

### Mechanical

Dimensions (LxWxH), Weight	160mm x 160mm x 35mm, 2Kg
Color	Black/White

## Model Numbers

-KPOLED-WRD-WT	OLED wired bus keypad - white color case
-KPOLED-WRD-BL	OLED wired bus keypad - black color case
-KPLCD-WRD-WT	LCD wired bus keypad - white color case
-KPLCD-WRD-BL	LCD wired bus keypad - black color case